

**EASILY CONTACT** our clinical support specialists and technical services team members online for live video support.

# OUR PROMISE

## ZEST LIVE!™ IS A PART OF A LOCATOR LIFE

Zest LOCATOR systems come backed by a variety of Zest LIVE! in-clinic support options that allow you to get the answers and information you want, in the way that's most convenient for your busy schedule.

- **LIVE! PRODUCT & ACCOUNT SUPPORT** - Get answers on product features and account status face-to-face from one of our specialists
- **LIVE! TECHNICAL SUPPORT** - Talk to a tech expert and get live insight on the go, even from your treatment room
- **LIVE! EDUCATION SUPPORT** - Expand your knowledge base with a list of in-person and virtual training resources on Zest LOCATOR products
- **LIVE! SALES SUPPORT** - Arrange a visit from a Zest specialist for in-clinic demos, training and support

Zest LIVE! in-clinic support, helps your patients and practice live A LOCATOR Life of more convenience, quality and confidence.

**For more information, call 800-262-2310 or visit [zestdent.com](http://zestdent.com) today.**



800.262.2310 • [WWW.ZESTDENT.COM](http://WWW.ZESTDENT.COM)

©2020 ZEST Anchors LLC. All rights reserved. LOCATOR, ZEST and Zest Dental Solutions are registered trademarks of ZEST IP Holdings, LLC. ERA is a registered trademark of Sterngold Dental, LLC.

L9155 REV A 06/2020



# MAKE IT A LOCATOR LIFE



**FROM PARTIAL TO FULL EDENTULISM, YOUR PATIENTS CAN LIVE WITH CONFIDENCE**





# A LOCATOR LIFE

IS A BETTER LIFE FOR YOUR PATIENTS AND YOUR PRACTICE

PROVIDING A HIGHER QUALITY OF LIFE AT EVERY STAGE OF THE TREATMENT CYCLE

**4.0** MILLION PATIENTS TREATED  
**280** DIRECT IMPLANT CONNECTIONS  
**100** COMPATIBLE IMPLANT PARTNERS

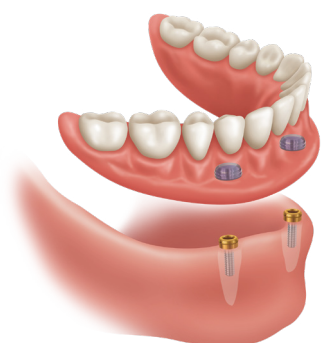
Zest LOCATOR systems offer:

- Cost-effective solutions for patients with financial limitations
- Advanced abutment technology that is designed to protect the implant, abutment and inserts for optimum performance
- An easier transition for patients to move forward with overdentures or implant therapy
- Better outcomes and greater satisfaction
- A lifelong relationship between patients and practices

With over 4 million patients treated, the Zest LOCATOR® system is the market leader in overdenture solutions for the entire patient journey, from **partially** to **fully edentulous**.

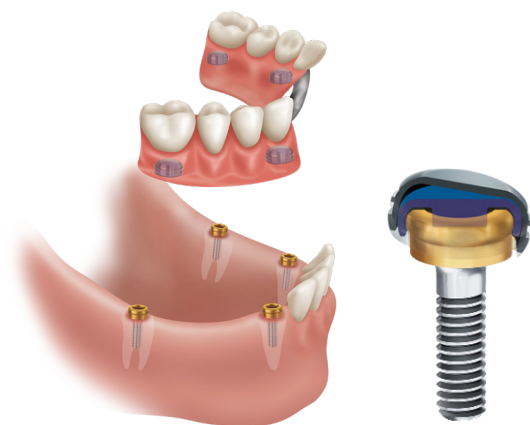


## PARTIALLY EDENTULOUS SOLUTIONS



### LOCATOR ROOT ATTACHMENT

The gentle and easily navigable transition to dental implants.



Comfort and a secure fit are the keys to overdenture and removable partial denture success for partial or fully edentulous patients. The LOCATOR Root attachment provides customizable retention, better stability and improved aesthetics, while helping preserve the health of a patient's remaining teeth and bone.



Angled posts accommodate divergent roots

- Leverages the natural tooth root for retention of overdentures or removable partials
- Provides immediate retention while implants integrate - patients enjoy the confidence and benefits sooner
- Helps deter bone loss and maintain facial structure
- Superior stabilization for removable partials - improves aesthetics, retention and preserves remaining teeth
- Offers 0°, 10° and 20° post flexibility for divergent roots
- Enables the conversation on the importance of implant-retained overdentures before the development of full edentulism



**Dr. Xavier E. Saab, DDS, MS**

Patients with retained roots taking advantage of Locator Root abutments have a lot more solid retention and stability than traditional dentures. Utilizing a metal framework to provide additional strength and keep the denture lighter in conjunction with the three Locator Root attachments, we were able to remove the majority of the palate and still give the patient superior retention, stability, aesthetics, and functionality.





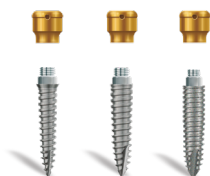
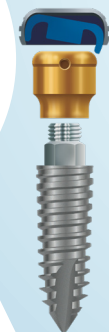
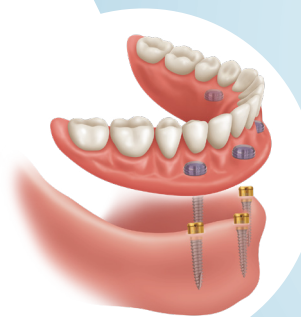


# EDENTULOUS SOLUTIONS

**A LOCATOR® LIFE OFFERS PATIENT QUALITY OF LIFE WITH CLINICAL EXCELLENCE.**

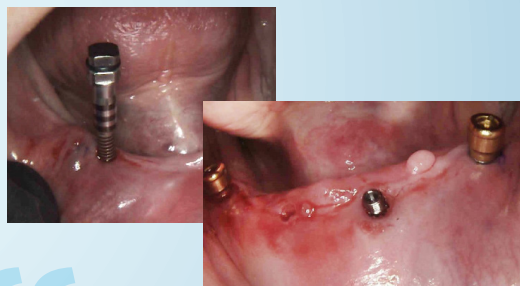
## LOCATOR OVERDENTURE IMPLANT SYSTEM

The economical, ridge-specific overdenture implant solution that gives partially or fully edentulous patients simplicity and a quality of life they didn't think they could afford.



2.4MM 2.9MM 3.4MM

- Only implant solution conveniently packaged with market-leading LOCATOR and designed specifically for overdenture therapy
- Available for all ridge sizes – easily and affordably accommodates narrow and standard ridges
- Ideal overdenture solution for patients with severe resorption and very narrow ridges
- Self-tapping for ease of insertion and increased primary stability
- Less invasive and delivers more predictable outcomes
- All-in-one package convenience – includes implant, LOCATOR abutment and processing pack
- Backed by a 10-year warranty

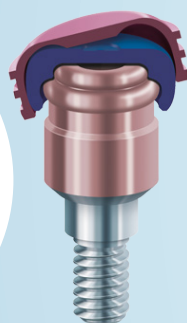
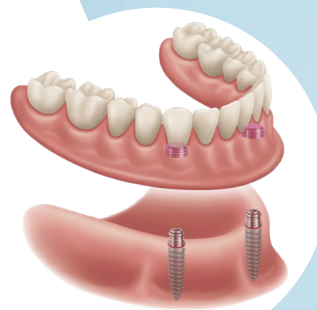


**Dr. Kelly J. Olsen, DDS**

LOCATOR Overdenture Implants provide great primary stability for my overdenture cases! Because of the aggressive threading and solid primary stability, simply follow the simple surgical protocol and the self-taping threads will provide you good primary stability that in most type I and type II bone situations will allow you to immediately load the implants within the denture, which is a big win for you and the patient.

## LOCATOR R-Tx REMOVABLE ATTACHMENT SYSTEM

Refined, re-imagined and improved, LOCATOR R-Tx is a better, simpler and stronger overdenture attachment innovation.

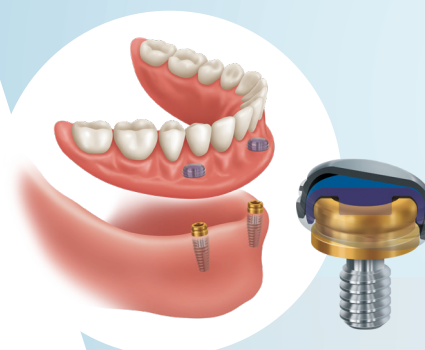


**NEW LIMITED-RANGE INSERTS** allow a more secure fit for patients with 10° of implant divergence or less.

- 25% greater wear resistance, with patented DuraTec® coating
- Patented system innovations now accept up to 60° of implant divergence, eliminating the need for pre-angled abutments
- Pivoting technology enables easier denture alignment and seating for patients
- Enhanced customizable retention, with low, medium and high retention inserts for standard range and limited range inserts
- Accepts standard .050"/1.25mm Hex Driver
- Convenient, all-in-one packaging features abutment, denture attachment housing with processing insert, retention inserts, and block-out spacer
- Pink anodization applied to housing for improved aesthetics

## LOCATOR REMOVABLE ATTACHMENT SYSTEM

The self-aligning overdenture attachment innovation that revolutionized the industry and continues to be the market-leading attachment system.



- Clinically proven and trusted globally with over 4 million patients treated
- Virtually compatible with all implant systems with over 280 connections
- Most requested, versatile and flexible overdenture attachment system available
- Offers customizable levels of retention, lowest vertical profile and exceptional durability
- Self-aligning technology allows for easy insertion and removal by patients

### SCAN BODIES

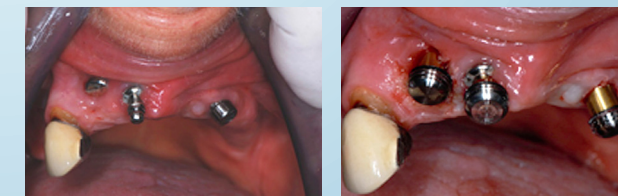
NEW LOCATOR Scan Bodies are designed to enhance your digital workflow by automatically creating the space needed for denture attachment housings in a 3D printed or milled denture, saving valuable chair time and simplifying your workflow.



**Gregori M. Kurtzman, DDS, MAGD, FPFA, FACD, FADI, DICOI, DADIA, DIDIA**

82 year old patient presented, following loss of the right lateral incisor and complaint of partial denture instability. Divergent angulation of the implants was noted, complicating addition of attachments on the new implants and allowing patient insertion/removal of the current prosthesis.

LOCATOR abutments were placed onto all three implants and picked up in the current partial denture. The LOCATOR'S ability to allow divergent attachments to passively engage the denture provided a solution that would be difficult with other overdenture attachments. My patient was extremely pleased with the outcome!



**Dr. Michael David Scherer, DMD, MS, FACP**

LOCATOR R-Tx made short work of simplifying non-ideal implant positions for our patient.

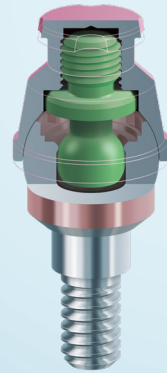
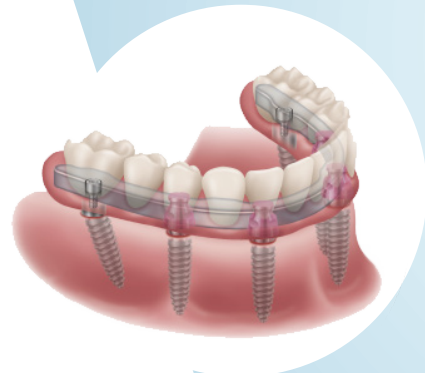
Our patient was thrilled at the result since the pink anodized coatings and strong new inserts allow her to eat and smile again with confidence!





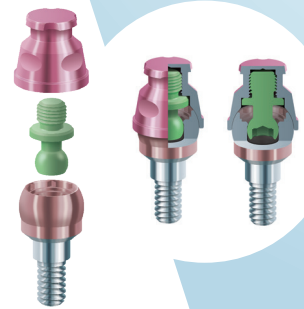
## LOCATOR F-Tx FIXED ATTACHMENT SYSTEM

A superior, fixed, full-arch implant solution, the LOCATOR F-Tx<sup>®</sup> Fixed Attachment System delivers uncompromised aesthetics and workflow enhancements.



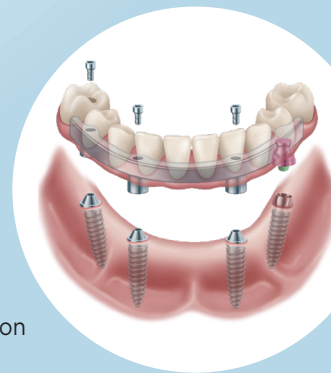
### LOCATOR F-Tx Fixed Overdenture Attachment System

- Compatible with screw-retained abutments in the posterior
- Conveniently snaps into place, eliminating the need for screws or cement in the anterior, allowing more flexibility in implant placement
- Easily removable by the clinician, but fixed for the patient
- Allows for 20° angle correction and 360° rotation of denture attachment housing
- Significantly reduces chair time for installation and maintenance and provides better aesthetics vs. traditional full-arch, screw-retained prosthesis



### LOCATOR F-Tx<sup>®</sup> Rescue

- The only immediate treatment solution that can rescue an existing fixed-hybrid prosthesis after replacing an implant
- Compatible with existing screw-retained abutments
- No need to fabricate new prosthesis
- Same-day rescue solution that saves time, frustration and money for clinicians and patients



# SEE HOW A LOCATOR LIFE IS A BETTER, MORE FULFILLING LIFE.

When patients are considering traditional dentures versus implant-retained overdentures, it is essential that they understand not only what they are getting, but what they might be giving up — freedom from their dentures.

#### TRADITIONAL DENTURES

- Requires ongoing purchase of denture adhesive
- Further bone loss can change fit over time
- Can cause loss or interference with taste
- Less expensive
- Confidence to maintain relationships, hobbies and social life

VS

#### A LOCATOR LIFE

- Greater durability and long lasting
- Better fit and more confident retention
- Helps deter bone loss in jaw
- Looks and feels more like natural teeth
- Enables enjoyment of virtually any food
- Superior support enhances and better maintains quality of life
- Enables an ongoing relationship with the dental professional
- Can be cost-effective

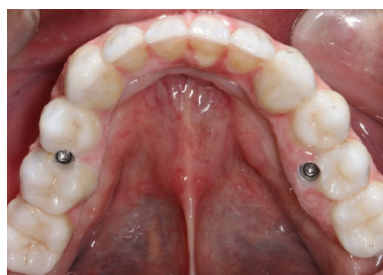
A LOCATOR Life offers patients unmatched performance and aesthetics that allow them greater satisfaction and confidence in their smiles and their lives.



**Dr. David Little, DDS**

This patient presented wanting an aesthetic-fixed solution for his lower arch. A monolithic full zirconia restoration was planned with six implants. A combination of Zest LOCATOR F-Tx and multi-unit abutments were used. LOCATOR F-Tx fixed attachments significantly reduce chair time and can provide better aesthetics. Without the need for screw access holes allows more flexibility in the prosthetic design and better clinical outcomes.

The patient was elated at the outcome of their new smile. Hygiene is very important to long-term success of these fixed cases. Another advantage of the F-Tx system is that the clinician easily removes it during hygiene visits, resulting in reduced chair time. Our practice enjoys the benefits of LOCATOR F-Tx for the lifetime of the patient.



## HYGIENE AND MAINTENANCE AN EASIER LIFE FOR PATIENTS AND PRACTICES

More than just an implant or overdenture solution, A LOCATOR Life is renewed confidence for patients and a sense of greater fulfillment for practices.

#### PATIENTS ARE MOTIVATED TO MAINTAIN GOOD HYGIENE FOR:

- Greater comfort
- Better retention
- More positive, long-term outcomes
- Faster treatment of any issues

#### DENTAL PROFESSIONALS BENEFIT FROM:

- Greater patient satisfaction and engagement
- Ongoing patient relationships
- Earlier diagnosis and treatment of problems
- Reduced scheduled emergencies
- Easier conversations regarding future treatment options

